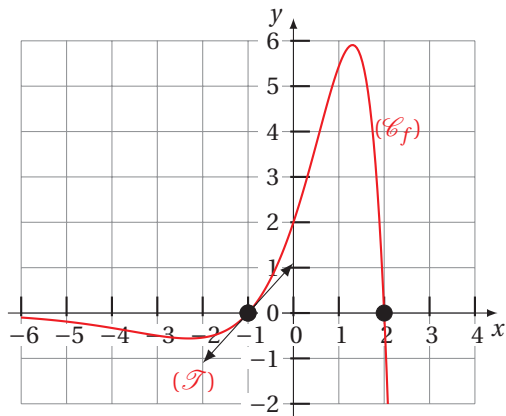


```
\usepackage{tkz-fct}
```



$$f(x) = (-x^2 + x + 2)e^x$$

```

1 \begin{tikzpicture}[scale=.6]
2   \tkzInit[xmin=-6, xmax=4, ymin=-2, ymax=6]
3   \tkzGrid
4   \tkzAxeXY
5
6   \tkzFct[color=red,thick, domain=-6:2.1785] {(-x*x+x+2)*exp(x)}
7
8   \tkzSetUpPoint[size=6]
9   \tkzDrawTangentLine[draw, kl=1](-1)
10  \tkzDefPoint(2,0){b}
11  \tkzDrawPoint(b)
12  \tkzDefPoint(-1,0){c}
13  \tkzDrawPoint(c)
14
15  \tkzText(2.3,4){(\mathscr{C}_f)}
16  \tkzText(-2.2,-1.5){(\mathscr{T})}
17  \tkzText[draw, fill=black!5, inner sep=4pt, rounded corners=0pt]%
18    (0,-3.5) {f(x)=(-x^2+x+2)\,\mathrm{e}^x}
19 \end{tikzpicture}

```

Les graphiques 1